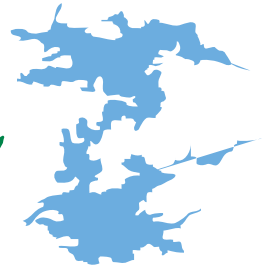


Lake WahWashKesh

CONSERVATION ASSOCIATION



— SPRING 2019 —

WELCOME TO SPRING?

After a long, hot, and dry summer last year, many of us were looking forward to a nice quiet colorful fall. Mother Nature surprised us with an early winter which arrived in November and settled in with heavy snows and cold. Many cottagers were caught with boats still in the water as ice formed in the small bays. Day after day of snow resulted in a record number of “snow days” for local school children and snow depths in the bush were higher than normal. **This combined with the thicker than normal ice cap on the lake resulted in serious flooding at the end of April and early in May. HoBoLink measured a maximum of 11.3 feet of water going over the dam and even now on the Victoria Day Weekend, the water is still 4 feet over the dam.** (See photos of the flooding on pgs 4, 5 & 11).

The Executive have been busy over the winter. Enhancements continue to be made to the website so you can now order your membership or per-

mits and pay for them by PayPal. **Thanks to Rob Guimond for this change.**

A new Dock Agreement with the Municipality of Whitestone has been signed by both the Association and the



**Turkey Island, Indian Narrows
May 4th at 8-1/2 feet over dam**

Municipality. The new agreement has improved wording and outlines some criteria for dock users. New signs are being made for both public access points and should be installed in June. The new signs also reflect changed wording and more criteria for boaters using the docks. I would like to thank the Municipality of Whitestone for paying one half of the cost of the new signs. The old signs were damaged by water and ice and were quite weathered.

SPRING FLOODING

The Association is
compiling data on flooding

PLEASE FILL OUT THE SURVEY

Print it right from
this Newsletter (pg 21)

OR Online Survey Monkey

www.surveymonkey.com/r/NJVN39T

**OR pickup a copy at
Bennett's Store**

**Completed paper surveys can
be mailed back or dropped
at Bennett's Store**

***Discussion at the AGM
Aug 3 • 9:30am***

At the 2018 AGM Mayor Chris Armstrong announced the formation of a task force to identify and propose solutions to the parking and docking problems at the two public access points on the Lake. Please see the important report (pg 15) enclosed on the progress of the Task Force. I would like to thank, on behalf of all members of the Association, Jeanine Ferris, Mike Maceina, and Ed Bennett Jr. who are members of the Task Force along with Councillor Beth Gorham-Matthews and

Chairman George Comrie.

Congratulations are due to Lynn Brennan who has accepted the position of vice-president. I look forward to Lynn's input and appreciate all the hours of time each of the Directors contributes to the Association.

On behalf of the Executive, I wish everyone a safe, happy, and healthy summer!

Don Comrie

WATERQUALITY SAMPLING PLANS

In 2019, water quality testing on WahWashKesh Lake will continue with the Yellow Springs Instrument (YSI) meter. Terry Tweed and myself will take water quality measurements throughout the Top Lake, Indian Narrows, and the Big Lake at 11 sites in June, July, and August.

This will be the seventh year of sampling WahWashKesh Lake with the YSI meter. The information gathered from this sampling will assist in understanding long-term water quality on WahWashKesh Lake.

Mike Maceina
Director and Water Quality Coordinator



WATER QUALITY VOLUNTEERS NEEDED on Lake WahWashKesh

The Lake Partner Program is Ontario's volunteer-based, water-quality monitoring program. The Ontario Ministry of the Environment, Conservation and Parks coordinates this program from the Dorset Environmental Science Centre (DESC) in partnership with the Federation of Ontario Cottagers' Associations. Each year, more than 600 volunteers monitor water quality in almost 550 inland lakes at over 800 sampling locations.

Volunteers collect water samples and return them, (postage paid) to DESC. All analyses are performed in the DESC Water Chemistry Laboratory. The resulting data are used by members of the public, partner agencies, government and academic researchers and private consultants to assess and report on water quality in lakes across Ontario. Total phosphorus, calcium and water clarity data are published each January on the provincial Lake Partner Program webpage.

At one time, we had volunteers that collected data from 10 different sites through out Lake WahWashKesh, but in 2018, water quality data was collected from only 4 sites by 3 volunteers. Monitoring long-term water quality is important to maintain the health on our lake and detect potential deleterious changes that might occur.

Volunteers collect 1 sample each year for phosphorus which is an important nutrient to algae and plant growth. Too much phosphorus will increase algae and cause water clarity to decline. Also, volunteers are asked to measure water clarity about 4-6 times during the summer with a secchi disk.


I am asking for a few cottagers to sign up and become a volunteer for the Lake Partner Program. We especially need to collect samples from Indian

Narrows and the Big Lake. Samples are typically taken close to where your cottage is by using a boat.

The link to sign up for the
Lake Partner Program is:
<https://www.desc.ca/programs/lpp>

Thanks for all your help in keep our lake clean and beautiful. Contact me if you have any questions.

Mike Maceina
maceimj@auburn.edu
Director and Water Quality Coordinator




*How long ago was
your septic serviced?*

Contact us for a free septic evaluation!

- Residential Design & Installations
- Commercial Design & Installations
- Waterloo Biofilter Certified
- Pump Out Services, Maintenance & Repair
- Custom Docks & Concrete Mount Systems
- Mobile Inland Barging
- Building Site Clearing & Preparation
- Landscaping & Excavation Services

SPECIALIZING IN IN-LAND
LAKES AND REMOTE
ACCESS LOCATIONS



C.E. BENNETT LTD.
R.R. 2, Duncuurch, ON P0A 1G0

705-774-0763
www.cebennett.com

ASSOCIATION MEMBERSHIPS

NEW WAY TO PAY

The 2019 Membership/permit purchase form has been activated.

It's an easy to follow process!

www.lakewwk.ca

At the top of the home page:
**SHOP PERMITS AND
MEMBERSHIPS**

You may now pick out the permits you wish to buy, and then pay for them with 3 options:

1. PayPal

OR 2. Email transfer via
treasurer@lakewwk.ca

OR 3. Mailing a cheque
From the home page: Scroll down to "Download your 2019 membership/permit form here" (or print from page 21) and mail it with a cheque



- Windows, doors, siding & trim
- Roofing • Renovations & additions
- Facia & soffit
- Flooring • Painting
- Decks & docks • Yard clean up
- Snow removal • Cottage cleaning
- Compact backhoe services
- Land & water accessible

Chris Norman
705-774-0565
chrisnorman55@hotmail.com

SPRING FLOODING

• PHOTOS • SLIDESHOW •

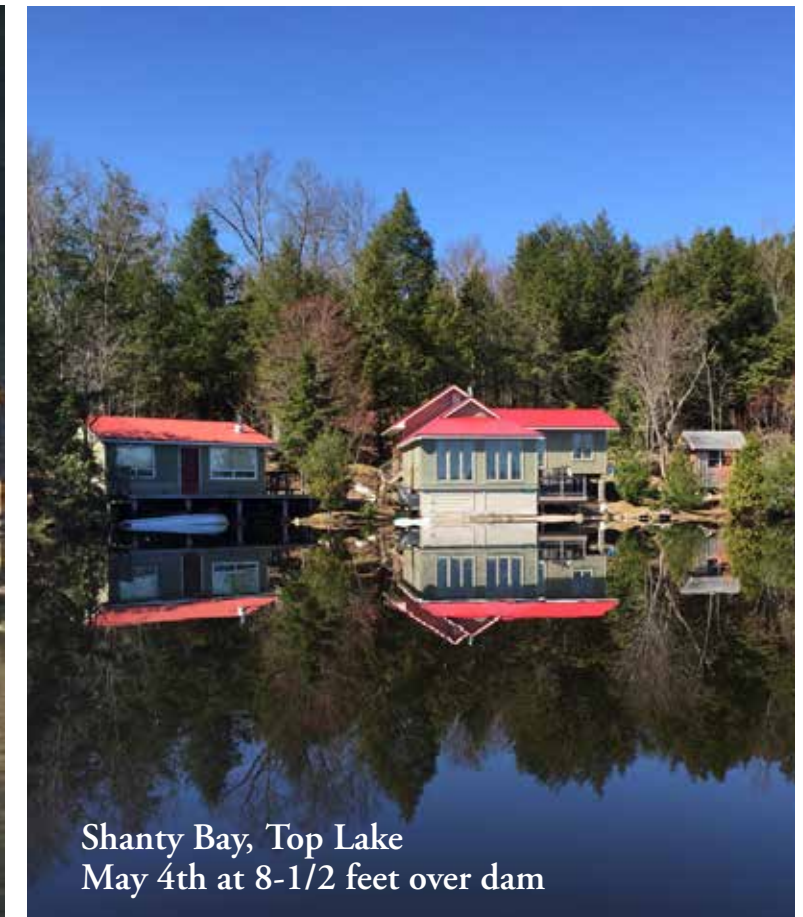
Lynn Brennan has agreed to collect and make a slide-show presentation of pictures of this spring's flooding at the AGM. If you have some to submit, please send them along with the location and date the photo was taken.

Please send them to: lynnmbrennan@gmail.com

Bennett's Bay - May 4th at 8-1/2 feet over dam



May 4th at 8-1/2 feet over dam



Shanty Bay, Top Lake
May 4th at 8-1/2 feet over dam



Absolute Peace & Quiet, Indian Narrows - May 4th at 8-1/2 feet over dam

Considering a cottage wedding?

All couples, all traditions... your expression of love and commitment to each other

As a licensed wedding officiant and a lifelong Lake Wahwashkesh cottager, I will collaborate with any couple to create a personally meaningful ceremony

Lynn Abbott-Lennox lynnalennox@gmail.com
705.325.4123 www.allseasonsweddings.com

Camp Mi-A-Kon-Da

a small summer camp for girls where lifetime friendships begin!



Pam Lamont Owner/Director
756 Mineral Springs Road
Dundas, Ontario L9H 5E3
Toll Free: 1-877-642-5663
Local: 905-648-9382
Fax: 905-648-1305

Visit our website at www.miakonda.com

J. Keck

Construction and Mechanical

Phone or text:
705-774-6351
Jasperkeck01@gmail.com

- Indoor and outdoor storage
- Property maintenance
- Small engine repair
- General construction
- Snow plowing

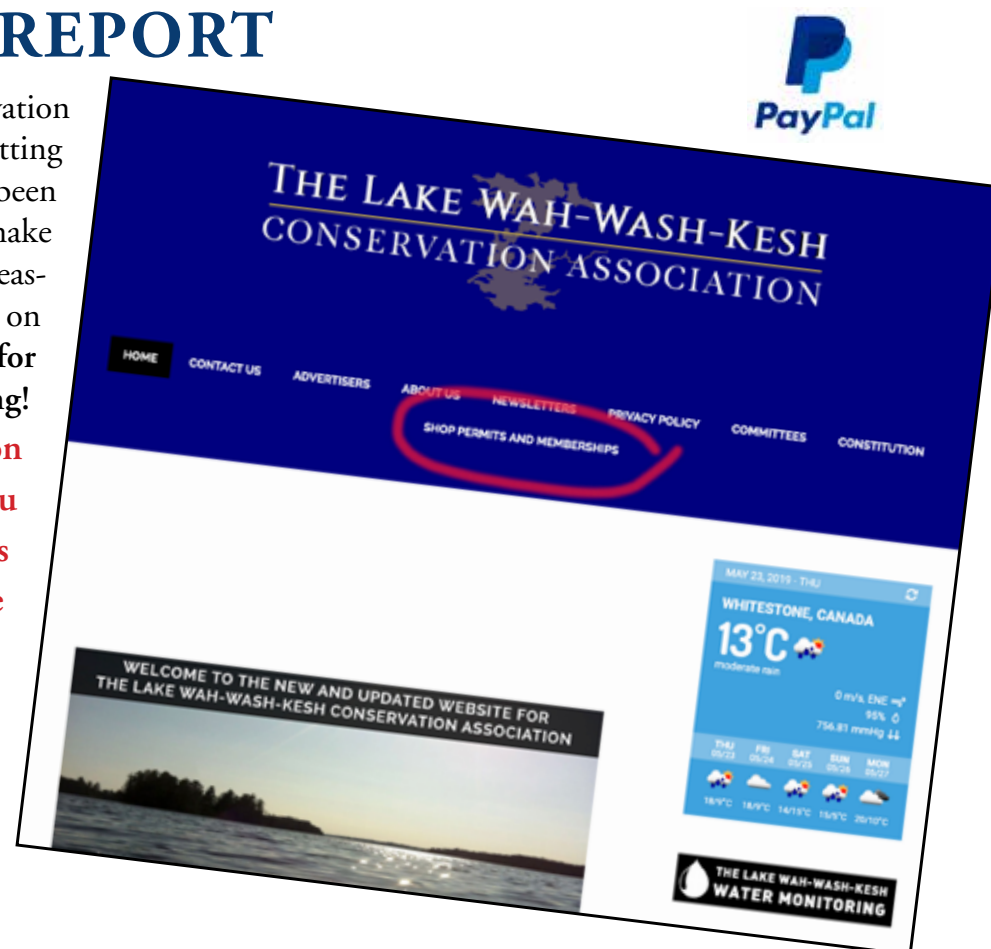



TREASURER REPORT

The Lake Wah-Wash-Kesh Conservation Association 2019 financial year is just getting started. For those of you that have not been on the website, please note you can now make payments and order permits much more easily using PayPal. (See more information on page 1) Special thanks to Rob Guimond for getting this enhancement up and running!

Please note that if you use PayPal on the website, it is important that you record your address and email changes that were previously included on the membership forms. (Your privacy will be protected). I will need this information to keep your account current for emails or newsletter mailings. Thank you in advance for this!

Hope for some warm weather soon!
Barb Cribbett



BURSARY

The Lake Wah-Wash-Kesh Conservation Association supports a \$250.00 bursary for students who are immediate family members of an Association member and are enrolled in post-secondary environmental education this fall.

Applications can be obtained by contacting Don Comrie. The deadline for submission of applications is July 1, 2019.

Don Comrie

G & M Mechanical

Small Engine Repairs
Chainsaw Sharpening

New! Frozen range-fed chickens, pork and beef
Fresh eggs for sale!

9 Gorhams Rd (off WahWashKesh Rd.)
705-389-3257

Outdoor **POLAR FURNACES**
Wood Fired
Hot Water Heating

Adapts to any existing heating system
30 Year Replacement Warranty

RE/MAX
Parry Sound-Muskoka Realty Ltd., Brokerage

47 James Street
Parry Sound, Ontario P2A 1T6
tel: 705-746-9336
fax: 705-746-5176

DIRECT: 705-346-1552
www.greig.ca
tina@greig.ca

Tina Greig
Broker
"EXPERIENCE COUNTS"

ASSOCIATION EVENTS

..... SUMMER 2019

ANNUAL GENERAL MEETING

Sat, August 3, 2019
9:30am Bennett's Barn

PLEASE REMEMBER
TO BRING THE
"General Meeting Package"
included with this email

CORN ROAST

Sat, August 17, 2019

4:00pm

Straub's Beach
Weather permitting.

Any time/date changes
will be posted on the
Association website

www.lakewwk.ca



LAKELAND CONTRACTING



Your
Whole Home Experts!

Beautiful design, professional
craftsmanship and peace of mind.

Design - Build - Remodel

Completing projects with professionalism and pride of workmanship for more than 35 years. Whether we are working on a home or cottage, completing a repair or building new - we do it all. You'll love the quality of our work... We guarantee it!

- ✓ Warranty on Workmanship
- ✓ 2 Million Liability Insurance
- ✓ Clean Job Sites
- ✓ Fixed Price Proposals
- ✓ Full WSIB Coverage
- ✓ Prompt Return Responses

Call NOW for your FREE consultation!

705-378-0544

www.lakelandcontracting.com
238 Oastler Park Drive, Seguin ON

Decks - Roofing - Interior Finish - Siding - Windows - Eavestrough

AE AMPED ELECTRIC

- ⚡ ELECTRICAL WIRING
- ⚡ GENERATORS
- ⚡ SOLAR

A Parry Sound and area business
offering friendly and reliable
electrical services for all
your home and cottage needs.

www.amped-electric.ca

| Steve Oickle | **705-203-9532** |
steveoickle@outlook.com

PROTECTING OUR SHORELINE

Understanding what we can and can't do on our shoreline is often confusing. To help WWKCA members understand the rules and for what they must obtain a permit, we have excerpted the following information from Ministry of Natural Resources & Forestry (MNRF) and Department of Fisheries & Oceans (DFO). It is helpful information when considering projects around the shoreline of Lake Wah-wash-kesh. **What authorities do you need to contact? What permits are required?**

How do we protect the aquatic integrity of the lake?

Permits and Wildlife: TIPS and Resources

Crown land work permits:

When do you need a work permit for projects on Crown land and shore lands? In Ontario, the use of Crown land and shore lands is regulated under the Public Lands Act. There are some exceptions, including Provincial Parks and Conservation reserves.

By law, you must get a work permit from the Ministry of Natural Resources & Forestry for certain activities on Crown land and shore lands before any work can take place. **It is an offence to work on Crown land and/or shore lands without a work permit when one is needed.** This applies to any public land managed by the MNRF, including:

- The beds of most lakes and rivers
- Shore lands covered or seasonally inundated by the water of a lake, river, stream or pond. Seasonally inundated refers to the highest level the water reaches (typically in the Spring).

It does not apply to:

- Federal lands and water bodies (e.g. the Trent-Severn and Rideau Canal waterways)
- Private land, unless the work potentially affects Crown land, such as shore lands

Activities that DO NOT require a work permit:

- Undertake minor road maintenance on public land
- Place a registered ice fishing hut on the ice
- Install a water line, service cable or heat loop for private residential use
- Remove a dock or boathouse that does not involve dredging
- Construct or place structures that do not contain living accommodation (bathroom, bar, covered deck) which are in physical contact with 15 square meters or less of the shore lands fronting your property (e.g. docks, single-storey boathouses)

Other activities are exempt, provided you follow the rules as laid out in the ministry's regulations. If you follow all of the rules, as indicated on the Ministry website, you don't need a permit to:

- Dredge shore lands previously dredged (within 5 years)
- Maintain, repair or replace erosion control structures on shore lands
- Relocate rocks on shore lands
- Remove invasive aquatic plants

Activities that DO require a work permit:

- Build a new erosion control structure or change the dimensions of an existing erosion control structure
- The placement of fill on shore lands (infilling lake or river bed, or

building an erosion control structure) for any other purpose

- Create a new dredge or expand an existing dredge
- Construct a building or structure, except for building(s) registered for mining purposes
- Construct or place a structure or combination of structures that are in physical contact with more than 15 square meters of shore lands (e.g. docks with large cribs)
- Construct a road, except where constructed under the authority of the Crown Forest Sustainability Act
- Construct a trail, except when constructed under the authority of the Crown Forest Sustainability Act or for mineral exploration purposes
- Construct a water crossing, such as a bridge, culvert or causeway, except when constructed under the authority of the Crown Forest Sustainability Act
- Remove native aquatic vegetation along the shoreline of Georgian Bay, Lake Huron and on the Canadian Shield
- If you conduct activities subject to exemptions but cannot follow the rules

In addition to a work permit, you may require authorization to occupy Crown land.

How to apply for a work permit? A work permit application is reviewed and, if approved, issued free of charge by the ministry. Please contact the Parry Sound District Office at: psdistrict.mnrf@ontario.ca

Other approvals

Before you start any work, find out whether additional authorizations are required.

You should consult your local Municipality to determine if they have Official Plan policies or zoning bylaws in place that might affect, prohibit or control the construction and placement of a structure on Crown land and shore lands. You should also check with other government agencies that may have an interest in your proposal (e.g. local Conservation Authorities, Federal Departments of Fisheries & Oceans and Transport Canada).

- Your local municipality/township
- A local conservation authority
- The Ontario Ministry of the Environment & Climate Change
- Fisheries & Oceans Canada
- Transport Canada
- The Ministry of Natural Resources & Forestry
- Other provincial ministries
- Ontario One Call (if hydro/gas lines could be impacted)

You may also want to discuss the project with neighbours before starting work.

If you wish to report any natural resource violations please call the MNRF TIPS line at 1-877-847-7667

Department of Fisheries and Oceans (DFO)

Projects near water

The Fisheries Act requires that projects prevent causing serious harm to fish unless authorized by the Minister of Fisheries & Oceans Canada. This applies to work being conducted in or near waterbodies that support fish that are part of or that support a commercial, recreational or Aboriginal fishery.

In addition, The Species at Risk Act (SARA) prohibits the killing, harming, harassment, possession, capturing or taking of a species listed as extirpated, endangered or threatened; the damage or destruction of a residence or the destruction of any part of the critical habitat of a species at risk, unless authorized by the Minister who is responsible for the species in question. The Minister of Fisheries & Oceans Canada is responsible for the protection of aquatic species at risk wherever they are found with the exception of areas administered by Parks Canada Agency.

- A full list of species at risk can be found at: www.sararegistry.gc.ca
- Maps of aquatic species at risks distributions can be found at: <https://www.dfo-mpo.gc.ca/species-especes/sara-lep/map-carte/index-eng.html>
- You can find details of whether or not a review by DFO is required by visiting: <http://www.dfo-mpo.gc.ca/pnw-ppe/index-eng.html>

Seek advice from a qualified environmental professional if you are unsure about whether your project requires a review by DFO.

Contact a fisheries protection office near you if you have reviewed the information, sought professional advice and still have questions.

In all cases, it is your responsibility to ensure you follow any additional requirements from other federal, provincial and municipal jurisdictions and ensure compliance with the Species at Risk Act and the pollution prevention provisions of the Fisheries Act

Links to additional information

There is a wealth of information on healthy shorelines and good lake stewardship practices.

- <http://www.muskokawaterweb.ca/>
- <http://loveyourlake.ca/>

Planning and Development Committee



JIM MARSHALL
BROKER

RE/MAX
PARRY SOUND-MUSKOKA REALTY LTD., BROKERAGE

Office: 705.746.9336
Cell: 705.774.0453
info@jimmarshall.ca
www.jimmarshall.ca
47 James Street,
Parry Sound, Ontario, P2A 1T6

"Boundaries Borders and Walls"

Spoke-n-Word/Spoke-N-Art

My family has been cottaging on the lake since 1963 and as residents of the USA we have crossed the USA/Canada border more times than I can remember. And while at the lake have met many from countries and continents. Over time, the exposure to different people, culture, and beliefs has opened my eyes and, perhaps, many of yours.

So it is with great respect that my wife and I (the founders of this project) invite you to participate in a multi-national, multi-continent public engagement art project that asks "Who are you?" and "What do you aspire to?" And then express those thoughts through art or word that "We are more alike than different."

Since January 25th, over 300 people have participated from 4 continents, 6 countries and multiple states from Maine to Georgia. Multiple exhibitions have been held displaying the collected works both in Europe and the USA.

This collaborative art project between the founders and the public to break down the **Boundaries Borders and Walls** that we all create that help divide society by culture, religion, race, ethnicity, social status, age and sex. The project is an affirmation by the public in their own voice that we reject the divisiveness of our political leaders and forge a better understanding amongst all people.

We provide the 4" diameter or square fiberboard canvas for the



creation of your own work of art, poetry, single word, or short phrase to convey your message. Your creation will be incorporated with the other creations from around the world. Your unique canvas number will allow you to track where your canvas is placed on exhibition at schools, universities, galleries, and other venues around the world

- **There is no cost to participate**
 - **Nothing is being sold**
 - **There is no age limit**
- **There is no skill requirement**
 - **There is no geographical restriction**
- **And your privacy/anonymity is maintained at all times.**

If you wish to participate please send an e-mail to ajgilewicz@gmail.com with information on how many canvases you would like and where we can send you the materials. And if you may be so inclined, please review the art web page that can be found on Facebook under my name (Al Gilewicz) or also on Facebook the art project page **Boundaries Borders and Walls**.

We look forward to seeing you at the AGM in August and perhaps are able to share and compare how people oceans away think with those of us who enjoy Lake WahWashKesh.

Al Gilewicz

May 4th at 8-1/2 feet over dam



ARDBEG, ONTARIO

**LICENSED RESTAURANT
CONVENIENCE STORE
AND GAS**



**OPEN 7 DAYS A WEEK
DURING SUMMER & SNOWMOBILE SEASON**

**WORMS, FISHING GEAR ICE, CUBE & BLOCK
PROPANE TANK EXCHANGE**

**MENUS AND HOURS ON OUR WEBSITE
www.loggersstationhouse.com**

1294 HWY 520, ARDBEG

705-389-1966

RONA

The Canadian How-To People

- Estimates & Designs are **Free**
- Large inventory of landscape stone, pavers & retaining walls
- Septic Systems & Culverts
- Kitchen & Bath Designer on staff
- We have all your building & decorating needs

FREE Delivery to Lake WahWashKesh
(some conditions apply)

115 Bowes Street, Parry Sound
1.888.464.7596 705.746.5894
service@parrysoundrona.com

Green Corner

by N. Glenn Perrett

Cutting Grass Without the Gas! DeWalt 20" 3-In-1 Brushless Mower

(DCMW220P2)

www.dewalt.ca

I'm always looking for quality eco-products so when I heard that there was a battery-powered lawn mower I was interested in trying it. Whenever I can reduce my use of fossil fuels I'm pleased.

Although we have significantly reduced the area of grass around our home, there is still some to cut. To review the *DeWalt 20" 3-In-1 Brushless Mower* I thought that I would give it a difficult assignment – the grass in what was the small paddock for our horses and donkey (and likely numerous other animals over the years since the house and barn were constructed in the late 1800s.) While we no longer have equine family members, their manure over the decades has made the grass incredibly lush.

We tackled the long, thick grass using different settings for the cutting blades as well as using the mower with the grass collection bag, using the mower in rear discharge mode and using the grass mulching insert. Due to how long and lush the grass was I was expecting there to be some issues, but I was pleasantly surprised. The mower performed admirably on the settings we used (lowest and middle of the five blade settings.) When the collection bag was used, it gathered the vast majority of the grass clippings and was easy to empty. Due to the condition of the grass, the bag did fill quickly.

When the mower was used in the rear discharge mode, it didn't have issues with the grass and left very little to collect. There was a minor, but not unexpected, issue when we used the mulching insert on the grass. While the mow-



er mulched the grass effectively leaving no clippings that required collecting, it did shut off a few times when the amount of cut grass needing to be mulched was cut quicker than the mower could mulch it.

Since we tested the mower in the fall, we were able to see how it cut and mulched our leaf-covered lawn using the mulching insert. The mower did well with this test too, cutting the grass and shredding the leaves into much smaller pieces.

The mower uses two batteries to operate and will not operate on a single battery pack. The two batteries that came with the mower (charger was also included) were *DeWalt 20V Max XR AH Lithium Ion batteries (DCB205)*. These batteries powered the mower for a little more than 20 minutes cutting an area approximately

30 metres by 14 metres before needing to be recharged.

We also used a set of two *DeWalt 20V/60V Max Flexvolt 9.0 AH Lithium Ion batteries (DCB609)* which also came with a charger. Having two sets of batteries will allow you to cut more lawn before needing to recharge the batteries. These batteries



performed similarly to the batteries that came with the mower and lasted a little longer cutting grass for close to 25 minutes. (It is difficult to compare the two sets of batteries as conditions varied including what cutting mode was being used.)

While this mower would not be practical for cutting large lawns (unless you don't mind having to charge the batteries in order to complete the task) it is effective for smaller lawns and grassed areas. Cottages that feature small areas of grass could also benefit from this battery-powered mower.

As long as you don't try to use this mower for jobs that are bigger than what it was intended for, the *DeWalt 20" 3-In-1 Brushless Mower* is an effective mower that does a nice job cutting and mulching grass without the use of gasoline!

Note: Before using this mower read and follow the instruction manual and take all precautions pertaining to safety.

Update: It has been over a year since I started using the *DeWalt Flexvolt 60V Max Brushless Chainsaw (DCCS670X1)* and I'm still impressed. Everything is still in good working order and this battery-powered chainsaw has been used to cut softwood up to 12" in diameter as well

as hardwood up to approximately 6" in diameter. (For cutting down most trees and cutting up large logs I still use my gas-powered chainsaw.)

Large Strap Hinges

www.leevalley.com

(item # 01X36.30)

If you are looking for hinges for a large door (particularly if you want a much earlier look) you will want to consider these *Large Strap Hinges* from Lee Valley. According to the Lee Valley website, these hinges were, "Designed to emulate early American forged hardware" and "is typical of the hardware used in the 17th and 18th centuries." Hinges in the series vary in length from 9" to 13" and there are both smooth and rough (made to look weathered or corroded) textures. The finish is flat black.

Recently we had to make an oversized door my wife constructed a beautiful, tongue-in-groove pine door. The door looks old and we used two 13" *Smooth Strap Hinges (item # 01X36.30)* from this series. Not only did the hinges finish the door nicely, but, due to their length, they increased the stability of it as well. The made in USA hinges

are made from 1/8" thick steel and come with mounting screws.

Lee Valley offers an extensive selection of quality hardware.

A Look Back Product Review –

SS Compost Pail

www.leevalley.com

While you can review products shortly after using them, you can't accurately cover how long they will last or if their effectiveness lessens with frequent use over an extended period. This *SS Compost Pail* from Lee Valley (item XG150) continues to impress after a decade of use. Our 6-litre stainless-steel compost pail has been constantly in use for 10 years now and it looks like new – and right at home on our kitchen counter. The attractive pail is easy to clean and doesn't take on the smells of the compost!

L.M. CHIMNEY SERVICES and PARRY SOUND HEATING

Professional Chimney &
Heating Services

117 North Road, Parry Sound

• phone: 705-746-5377

• cell: 705-746-0415

www.lmchimney.com • lewis@lmchimney.com

Why let an amateur practice on your chimney?



W.E.T.T. Cert#3404 • TSSA Lic#0734029

P. Keck CONSTRUCTION Ltd.



- **SAND, GRAVEL & EXCAVATING**
- **SEPTIC INSTALLER**



45 years experience
705-938-0990



The Ridge at Manitou

Experience a Golfer's Paradise
Lakeside Dining at its Best
Golf & Dine Packages \$99

For Whitestone Community specials, golf rates and Ridge events click 
www.ridgeatmanitou.com/wca

Come Golf, Dine, Stay, Enjoy
A Certified Audubon Cooperative Sanctuary on Manitouabing Lake, just east of Parry Sound.



Come Home to COMFORT & WARMTH

Visit us for our advice, our quality brand names & our unique & unusual antiques & collectables

Fabric & leather sofas, sofa beds & futons, mattresses, bedroom furniture, quilts & blankets. Painted, rustic & reclaimed furniture, area rugs, unusual collectables & quality antiques. Ask about custom orders and take advantage of our **FREE delivery, set up & disposal**



17 Parry Sound Drive, Parry Sound, ON P2A 2W9
Tel: 705.746.5100 Toll Free: 1.800.633.9066
www.harrisfurniture.ca sales@harrisfurniture.ca

WAHWASHKESH LANDINGS TASK FORCE

Late last year, Whitestone Council established a task force to investigate and recommend improvements to the parking and docking facilities located at Indian Narrows and Bennett's Bay landings that are used to access the upper lake. The Task Force - whose members are Councillors George Comrie and Beth Gorham-Matthews, Wah-Wash-Kesh Conservation Association Executives Jeanine Ferris and Mike Maceina, and Ed Bennett Jr. - has come to be known as the Wah-WashKesh Landings Task Force.

The Task Force began meeting by teleconference in February, and has been meeting regularly since to discuss various aspects of the problem and potential solutions. We have attempted to follow the structured approach of first identifying the highest priority access-related problems before considering potential solutions. So far, the greatest perceived needs have emerged as more parking spaces adjacent to the public landings, and more docking at the Bennett's Bay landing. It also quickly became apparent that the need for parking is not just in the summer months, but also during the snowmobile season, when the same area is used for access

to the lake and the OFSC trails by snowmobilers. As a result, the Task Force's terms of reference have been expanded to include winter parking of vehicles and snowmobile trailers.

Other topics of discussion have included:

• **Parking & Docking Permits**

Over the past two years the Association has sold, on average, roughly 100 parking permits (of all types) and roughly 55 lake access permits per year. However, our surveys of parked vehicles and trailers on long weekends in the 2016-2018 timeframe revealed that fewer than 10% of them displayed Association parking stickers. This observation has led to discussion about whether enforcement of permit parking may be necessary.

• **Handicapped Parking**

Our preliminary needs assessment has suggested that more parking spaces for those with handicapped parking permits are required. And once again, there is evidence that the existing spaces

are being used by persons without permits (a Provincial offence).

We have initiated discussions with the local office of the Ministry of Natural Resources and Forestry as to the possibility of expanding existing land use permits to increase the available year round parking at the intersection of WahWashKesh Road, Indian Narrows Road, and Macey Drive.

I am pleased to advise that Whitestone Council has included \$37,500 in its 2019 capital budget for potential improvements to parking in this area. We hope to have more details available on the proposed by the time of the Association's annual meeting on August 3rd.

*George Comrie, Chair
Wah-Wash-Kesh Landings
Task Force*

GEORGIAN RENTALS



Bill Robinson Henry Thornton

3 Queen Street, Parry Sound, Ontario P2A 2W1
(705) 746-5243 • (705) 746-7368
Fax (705) 746-6129 O/B 832395 ONT.INC

Expert • Professional • Experienced



**From Foundation to Roof,
your Complete Building Supply Centre**
Same great service and products!

22 Seguin Street, Parry Sound
(705) 746-5825 (705) 726-2147 1-800-810-0156

Book Reviews

by N. Glenn Perrett

Though the Heavens Fall

Anne Emery
ECW Press, 2018, 421 pages
ISBN: 9781770413863

Anyone looking for a mystery series to read would be well advised to consider the Collins-Burke mystery series by Anne Emery. The series is set in Eastern Canada and features Monty Collins and his wife Maura MacNeil – both lawyers – and their good friend Father Brennan Burke.

The latest book, and tenth in the series, is *Though the Heavens Fall*. The setting is 1995 Belfast and Monty is on assignment from his law firm in Halifax and Maura and Father Burke have also accompanied him. Father Burke was born in Dublin and has an extended family in Ireland. With the IRA having called a ceasefire, it is a relatively good time to visit the city. Unfortunately, past crimes and a case that Monty is working on will have large repercussions for many people. Filled with lots of suspense, a good plot and some history, *Though the Heavens Fall* is another excellent novel in this entertaining series!

1,000 Books to Read Before You Die:

A Life-Changing List

James Mustich
Workman Publishing
2018, 948 pages
ISBN: 9781523504459

Looking for some good books to read? Want some information about the books before you commit to reading them? In his well-researched book *1,000 Books to Read Before You Die: A Life-Changing List*,

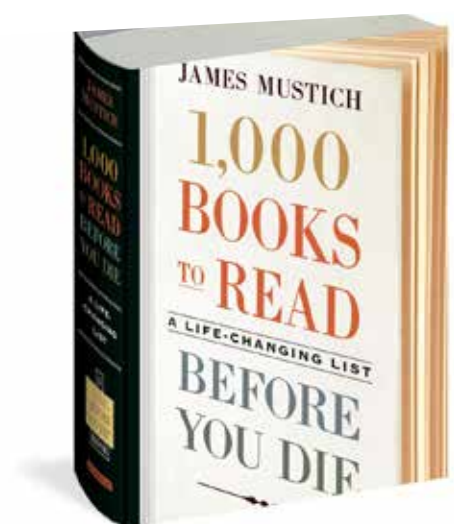
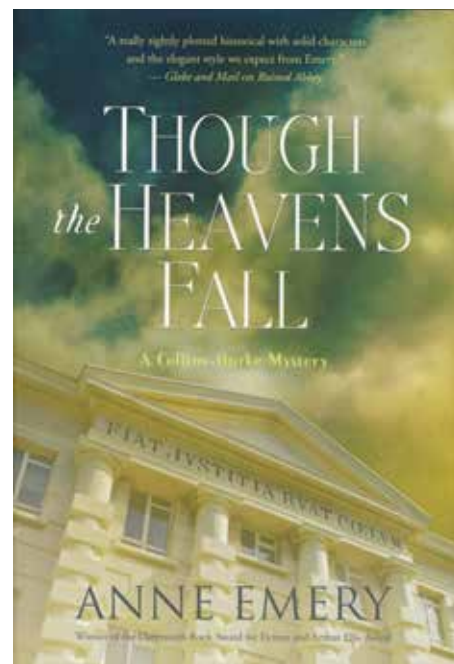
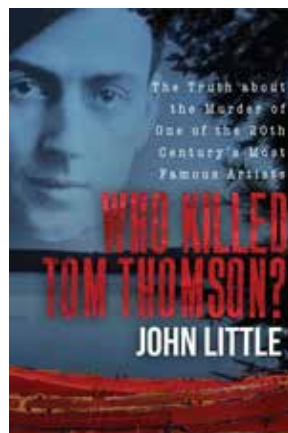
James Mustich provides lots of information about an assortment of books the author recommends. There are literary classics as well as much lesser known titles providing the reader with an incredible selection of books to consider. The books included cover everything from biography, children's books and history to science fiction, poetry and science. The entries are accompanied by notes that include things like publication dates, preferred editions, other books by the same author and related books. In all more than 6,000 books and approximately 3,500 authors are recommended!

1,000 Books to Read Before You Die is a very good compilation of books promoting the wonderful world of reading. Simply open the book anywhere and let the listings guide you to creating your own list of books and authors to enjoy!

The Little Guide to Bugs

Alison Davies, illustrated by
Tom Frost, Quadrille
2018, 95 pages
ISBN: 9781787131637
Ages 7+

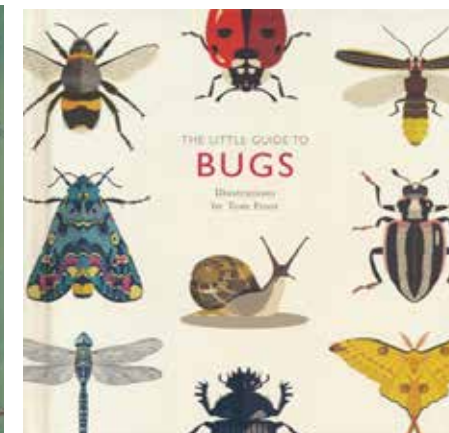
Do you or someone you know have a fascination or curiosity for bugs? *The Little Guide to Bugs* is a good starter book to get kids, and adults, interested in the often, overlooked bug community that surrounds us. The contents of the guide include detailed descriptions and illustrations of 40 bug species and a checklist in the appendix. Each bug has a full-page illustration and another page of information about the species such as



its scientific (Latin) name, common name, length, habitat, distribution, food and additional facts. At the back of the guide is a checklist to keep track of bugs who have been seen.

This bug book is designed to encourage and educate its readers to become citizen entomologists and study the world of bugs. In light of the biodiversity crisis, I believe we could all use more citizen scientists and encourage our future generations to learn about our natural world and biodiversity, both of which *The Little Guide to Bugs* does.

P.S. One thing to keep in mind



body currently rests. What is known is that the mystery that surrounds Thomson's tragic death is still of interest as books on the iconic Canadian painter continue to be published with John Little's *Who Killed Tom Thomson?* The Truth about the Murder of One of the 20th Century's Most Famous Artists being a recent, well-researched and interesting account of this century-old mystery.

John Little has extensively researched this case and his book makes for a fascinating read. Little's father, Judge William T. Little, was one of four men who dug up what was supposed to be Thomson's original, empty grave near Canoe Lake in Algonquin Park in 1956 where they found a body! Along with the author obtaining considerable information from numerous sources, he had access to the more than 50 years of research that his father had conducted on the case. Complementing the interesting text are 16 pages of black-and-white photographs.

Spring After Spring: How Rachel Carson Inspired the Environmental Movement

Stephanie Roth Sisson
Roaring Book Press, 2018, 31 pages
ISBN: 9781626728196
ages 4+

Rachel Carson is one of the most influential people pertaining to the environmental movement and *Spring After Spring: How Rachel Carson Inspired the Environmental Movement* is a good picture book educating children about this inspiring biologist, environmentalist and writer. The story describes how Rachel Carson was fascinated with nature and how spring was her favourite time of the year. Young readers will learn how Rachel initially wanted to be a writer but became a biologist – although she went on to write important books including the classic *Silent Spring*.

Five Kingdoms: Complete Collection

Brandon Mull
Aladdin, 2019, 5 books
ISBN: 9781534418332
ages 8+

Older children looking for a good series of books to enjoy at the cottage this summer will want to consider *Five Kingdoms: Complete Collection*. This set includes the books *Sky Raiders*, *Rogue Knight*, *Crystal Keepers*, *Death Weavers* and *Time Jumpers*.

The fascinating story begins when Cole Randolph and his friends disappear through a mysterious passage while enjoying Halloween. No longer in Arizona, but a place known as the Outskirts and which consists of five kingdoms, Cole's goal is to rescue his friends and return home. While trying to accomplish this goal Cole meets new friends, along with some dangerous foes, in this mysterious, magical land. *Five Kingdoms* is an ideal literary summer adventure!



when observing these species is to look with your eyes but do not touch. Nature is beautiful but you do not know what harms they can cause you or what harm you can cause them. The Little Guide to Bugs book. **Reviewed by Gleannan Perrett.**

Who Killed Tom Thomson?

John Little
Skyhorse Publishing
2018, 409 pages
ISBN: 9781510733381

It has been a little more than a century since artist Tom Thomson died in Algonquin Park and the circumstances surrounding his death are still a mystery. Not only is how the artist died in question, but whether it was an accident, suicide or homicide. There is even a question of where his

ASSOCIATION MEMBERSHIPS

NEW WAY TO PAY

The 2019 Membership/permit purchase form has been activated.

It's an easy to follow process!

www.lakewwk.ca

At the top of the home page:

SHOP PERMITS AND MEMBERSHIPS

You may now pick out the permits you wish to buy, and then pay for them with 3 options:

1. PayPal

OR 2. Email transfer

via treasurer@lakewwk.ca

OR 3. Mailing a cheque

From the home page: Scroll down to "Download your 2019 membership/permit form here" download a form and mail it with a cheque

Lake Wah-Wash-Kesh

CONSERVATION ASSOCIATION



2019 MEMBERSHIP and PERMIT PURCHASE FORM

Name: _____

Home Address: _____

Lake 911 Address: _____

Home Phone: _____ Cottage Phone: _____

Email: _____

I would prefer to receive news and information from the Association by

Hardcopy: ☐

Email: ☐

Membership @ \$40 each: _____ Total \$ _____

Names of each individual: _____

Parking Permits @ \$35 each: _____ Total \$ _____

Lake Access Permits @ \$40 each: _____ Total \$ _____

SAVE \$5 Combined Parking/Lake Access Permits @ \$70 each: _____ Total \$ _____

Trailer Parking Permit @ \$30 each: _____ Total \$ _____

TOTAL \$ _____

By completing and signing this form, you agree to receive email correspondence from the Lake Wah-Wash-Kesh Conservation Association

Signature: _____

☐ I wish to unsubscribe from receiving email correspondence from the LWWKCA

Cheque or money order made payable to:
Lake Wah-Wash-Kesh Conservation Association
P.O. Box 183, McKellar, Ontario P0G 1C0

THANK YOU for your SUPPORT of the ASSOCIATION

CottageFirst
Insurance

Get back to carefree

Life at the cottage shouldn't be stressful.
CottageFirst Insurance
was designed with this in mind.

Cade Associates understands cottages.
Let us create a custom insurance
solution to fit your unique needs.

cottagefirst.com

Exclusively available to members of



CadeAssociates
Insurance Brokers Limited



Pioneer Handcraft Furniture

Handmade in Canada Since 1946

Visit Our Showrooms & Workshop

Hwy 11 South, Severn Bridge & Hwy 400 North, Waubashene

800-567-6604 www.pioneerhandcraft.ca

Tim Stiles CONSTRUCTION Ltd.

www.timstilesconstruction.com

Custom Homes & Cottages
Renovations/Additions
Custom Kitchens
Decks & Docks
Foundations
Security Checks
Tilework

39 Edgewood Rd., RR#2 Dunchurch, Ontario P0A 1G0
 Tel: (705) 389-1726 ■ Fax: (705) 389-1546
 E-mail: tsstiles@hotmail.com



BOARD OF DIRECTORS

President

• Don Comrie
 Suite 501, 44 Longbourne Dr,
 Etobicoke, Ontario, M9R 2M7
 home: 416-241-5353
 cell/cottage: 416-407-0175
donaldegcomrie@gmail.com

Vice-President

• Lynn Brennan
lynnmbrennan@gmail.com

Directors

• Mike Maceina
maceimj@auburn.edu
 • Terry Tweed
tweed43@sympatico.ca
 • Rob Guimond
rguimond1@cogeco.ca

Secretary and

Advertisement Coordinator

• Jeanine Ferris
jlferris@live.com

Membership

• Don Comrie
donaldegcomrie@gmail.com

Treasurer

• Barb Cribbett
treasurer@lakewwk.ca

Newsletter Editor

• Lesley Hugill
 2258 Yates Court,
 Oakville, Ontario, L6L 5K6
 905-847-8748
hugill.lesley@gmail.com

MAIL

Lake WahWashKesh
 Conservation Association
 P.O. Box 183,
 McKellar, Ontario
 P0G 1C0

WEBSITE

<http://www.lakewwk.ca>

FACEBOOK f:

[Lake Wah-Wash-Kesh
 Conservation Association](#)

• Lake Wah-Wash-Kesh Conservation Association • 2019 WATER LEVEL SURVEY

ONE SURVEY
 PER PROPERTY

The Association is conducting this survey to gather data on the impact of this year's spring freshet.
 The data will be formulated into a presentation for the AGM on August 3, 2019.

There have been two higher than normal spring freshets on Lake WahWashKesh.

- Spring 1998 - estimated to be 11 feet above the dam (Hobo monitoring was not in place until 2008).
- Summer of 2017 - when water levels remained higher than normal all summer. The water level was approximately 3.6 feet above the dam that summer. The 2017 spring freshet was 7.15 feet above the dam. A normal spring freshet ranges between 6-8 feet above the dam.
- Spring 2019 - where the Hobo monitoring system recorded the high point at 11.30 feet above the dam at around noon on Thursday, April 25th.

The dam elevation is 225 meters above sea level. The theoretical flood elevation in the 2017 regulations is 229.57 meters above sea level. With the recent flood reaching 11.3 feet above the dam, the theoretical flood level is 14.99 feet above the dam (3.7 feet higher than what we saw this spring).

- 1 Property 911 address#: _____
- 2 Property location: Top lake _____ Narrows _____ Big lake _____
- 3 Has any structure ever been flooded on your property? Yes _____ No _____
- 4 When did this flooding occur? 1998 _____ 2019 _____ Annually _____
- 5 What structure flooded? Boathouse _____ Sleeping cabin _____ Main structure _____
- 6 Is this structure/s built above the theoretical flood elevation, which is 229.57 meters above sea level (2017 regulations)? Yes _____ No _____ Don't know _____
- 7 Is this structure/s built above the dam elevation, which is 225 meters above sea level? Yes _____ No _____ Don't know _____
- 8 What was the level of water above dam when flooding occurred? _____
- 9 What was the date when flooding peaked? _____
- 10 Will your flood damage be covered by insurance? All _____ None _____ Some _____

Comments: _____

Please send pictures of your flooding to lynnmbrennan@gmail.com (include date of photo and location)
 It would be helpful to provide contrast if a similar photo from the summer is available.

Please return
 by JULY 20

Please mail the survey to:

Lake Wah-Wash-Kesh Conservation Association
 P.O. Box 183, McKellar, Ontario P0G 1C0

Lake Wah-Wash-Kesh
 CONSERVATION ASSOCIATION



The Wah-Wash-Kesh Conservation Association appreciates your support in filling out this survey